

## MV UDP Distributor

### UDP over Internet and WiFi

MV-UDP-Distribution is aimed at sending multicast UDP streams of MPTS (Multiple Program Transport Streams) **over the internet**. This is a significant advancement in video transmission for Cable TV MSOs. The MV-UDP-Distribution system is designed to efficiently distribute high-quality video content across networks using the UDP protocol, which is commonly used for Cable TV industry because of its low latency and minimal overhead.

This solution is very useful in a situation where LCOs are delivered encrypted feeds via a fiber line by MSOs. It is seen that fiber lines get disrupted very often due to unforeseen reasons. And the LCO network is blacked out. The restoration of fiber line takes time. In some cases in suburban areas it takes days.

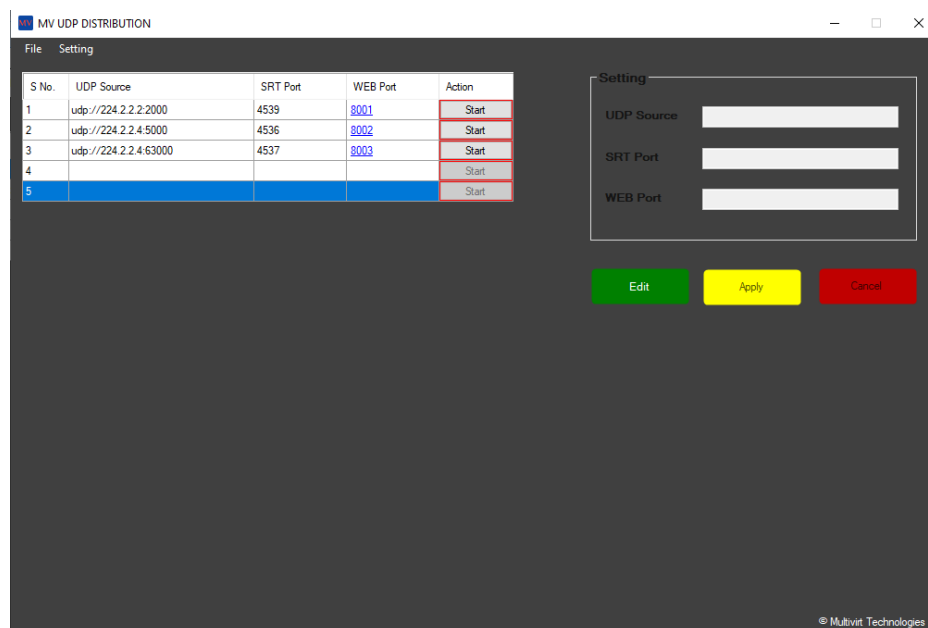
MV-UDP distribution is perfect solution in such cases. Sending **encrypted MPTS over internet** makes LCOs life easier and helps in restoring some services in minutes.

**The Solution has 2 parts UDP Distribution Server at transmit end and UDP Client at Receive end**

#### UDP Distribution Server

##### Features

- Accepts Multicast UDP streams as input
- Accepts SPTS or MPTS multicast stream or both
- Multiple MPTS or SPTS multicast can be sent simultaneously
- Can accept encrypted or clean feeds
- Packages MPTS into Internet/ Wifi friendly streams
- Transmits over internet/ Wifi



MultiVirt India Private Limited

101 -C, ASHRAM CHOWK, NEW DELHI - 110014

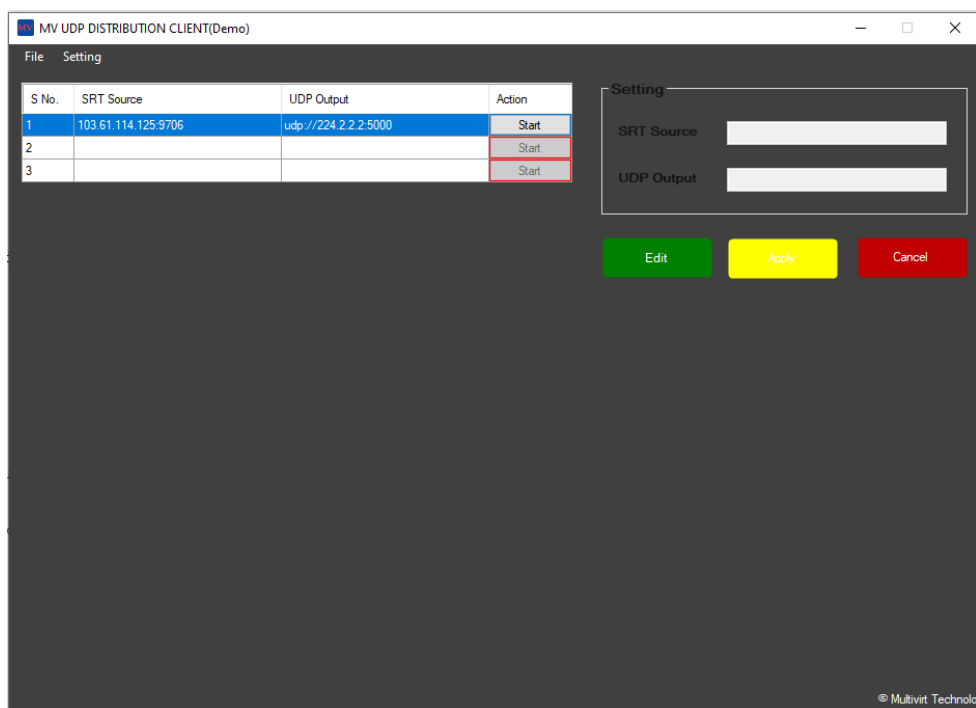
PH : +91- 11-43552830,42878421, [www.multivirt.com](http://www.multivirt.com)

[sales@multivirt.com](mailto:sales@multivirt.com), +91-9810064903

## UDP Distribution Client

### Features

- Accepts packaged streams as input over Internet/Wifi
- Can receive multiple packaged streams simultaneously
- Outputs multiple MPTS or SPTS multicast streams simultaneously
- Outputs encrypted or clean feeds can be



### Specs

#### Hardware Requirement

##### **For UDP Distribution Server**

Intel Core i3 – 8500 or similar , 16 GB RAM, Windows 10 Pro, 2 LAN ports

##### **For UDP Distribution Client**

Intel Core i3 – 6500 or similar, 16 GB RAM, Windows 10 Pro, 2 LAN ports